

READERS' GARDEN:
A WORKSHOP FOR ALL



Hakodate is a city of coexistence. Its residents grow up in an environment where the Russian Catholic Church sits next to a jinjya, shopping spaces develop within a series of old warehouses, Russian-speaking Japanese students share the same building with Japanese-speaking American students, and so forth. In addition, the duality held between the mountain and the sea speaks for the same balanced relationship that the city has maintained over the years. We see these coexistences as the heart of Hakodate, and believe the renovation of the Russian Consulate has a civic duty to resonate with and strengthen this core characteristic.

Due to the building's historical context and location, we endeavor to do two things in its rebirth: to preserve and inherit its local culture, and by doing so, create a point of gathering that accommodates for its neighborhood. In the long term, we wish to revive the place not only to serve its people, but also to actively advocate and educate its local cultures and values to its visitors, both young and elder, local and foreign.

Therefore, we decide to redefine the old Russian Consulate building as a library, and create a new building as a glass-blowing workshop. From the wooden roof structure in the old volume, we continue its life in wood and create all new spaces primarily in wood. Between the two volumes, a garden connects the two while exhibiting glass artworks and drawing people from both ends to one place. On the second level, a bridge travels from the old volume to the new, transitioning from inside to outside, monolithic to light. At the same time, visual dialogues are

created between the above and below, and most importantly, with the Hakodate mountain and the sea.

Students from schools in vicinity can come here for their studies and research, foreigners and local residents can come here to learn a local handicraft, nearby glassblowers can come here to teach classes and pass on the legacy, while jinjya and church-goers and everyone else are welcome to take a rest at the cafe and experience its diverse atmosphere.

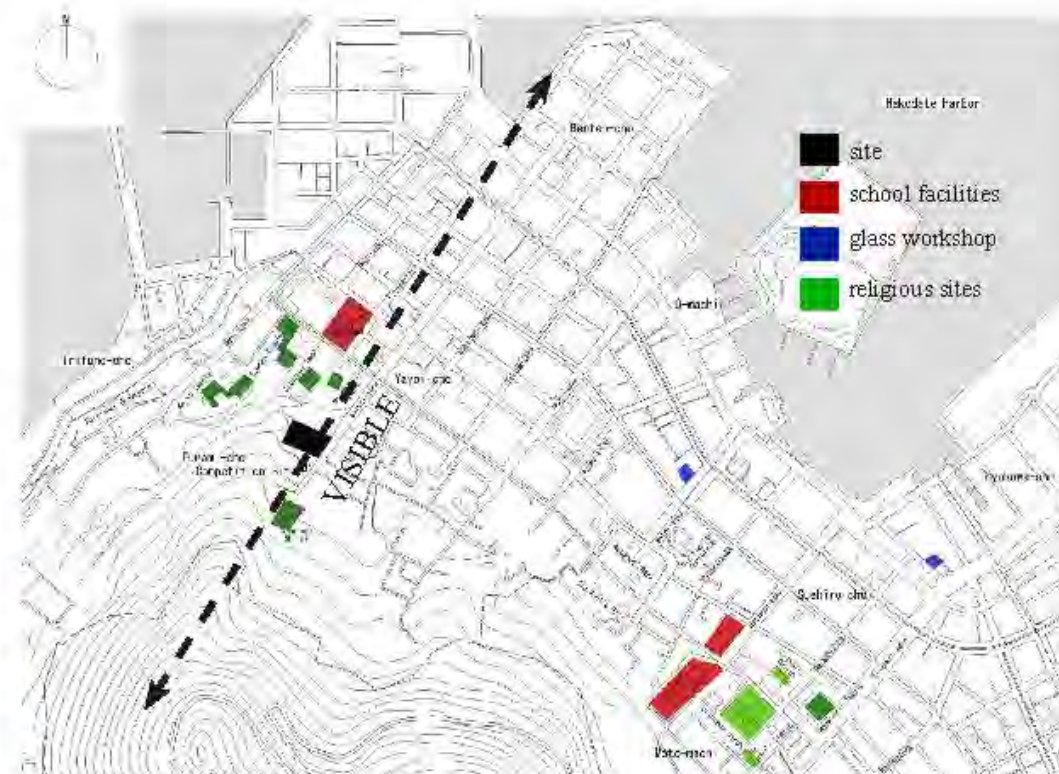
Our goal is to highlight Hakodate's unique balance between the past and present, foreign and local culture, while opening up the previous structure and making it embrace the site's natural elements. In doing so, we endeavor to capture Hakodate's key moments of coexistence, and bring it to the public's consciousness and celebration.



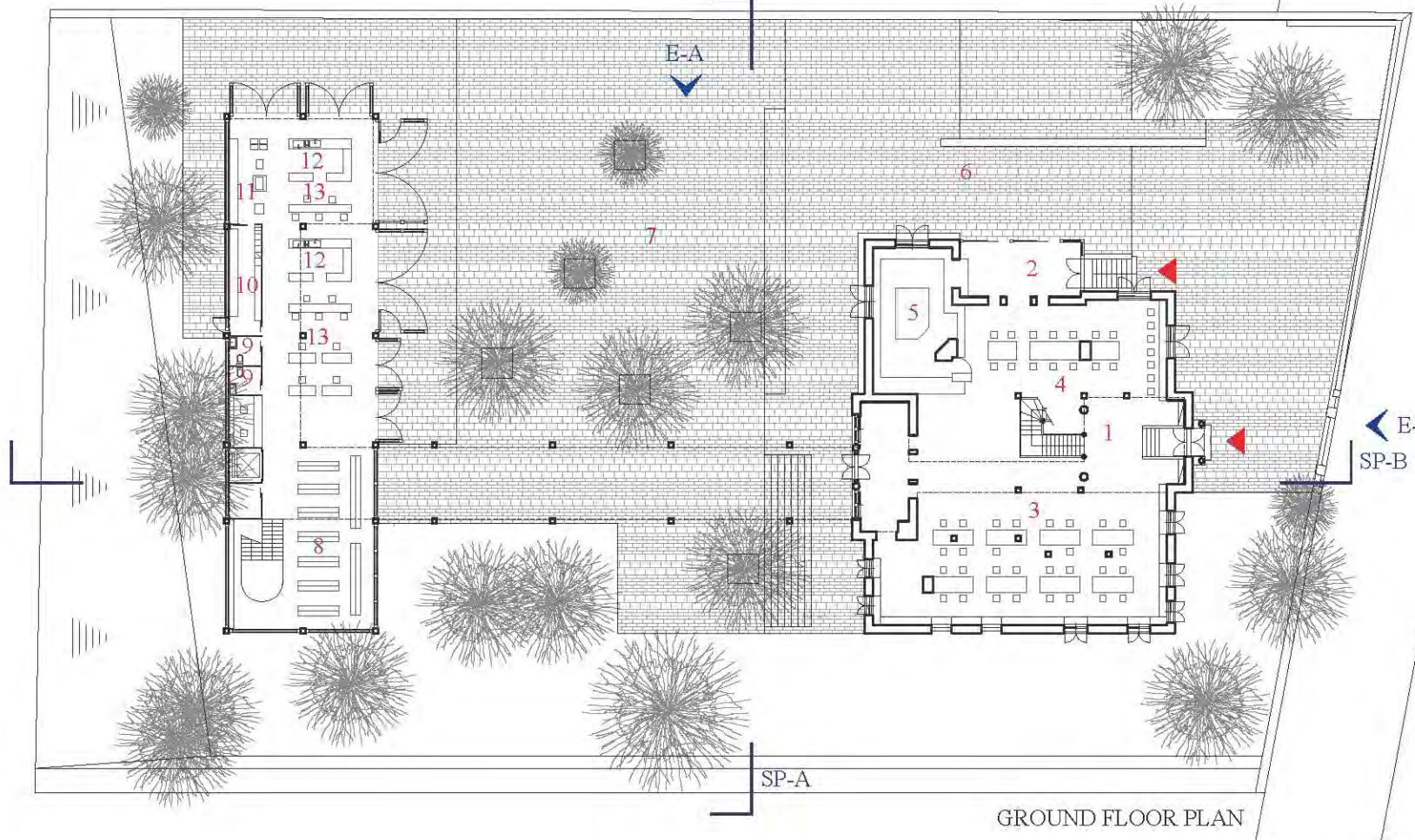
photo courtesy of: Hakodate Glass Studio



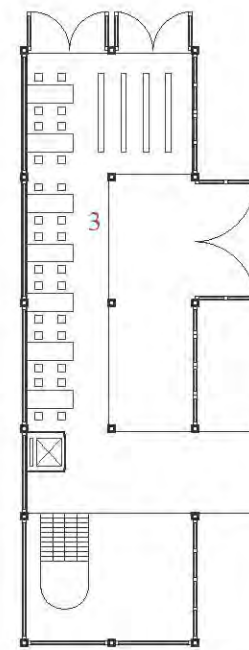
photo courtesy of: Hokkaido International Foundation



map drawing courtesy of: 2014 Furumi-cho Competition

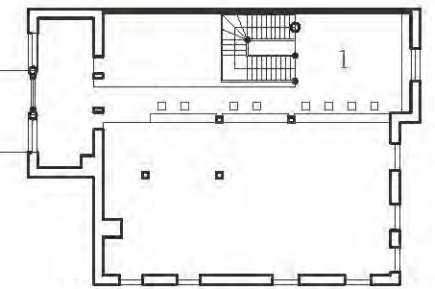


GROUND FLOOR PLAN



UPPER PLAN:

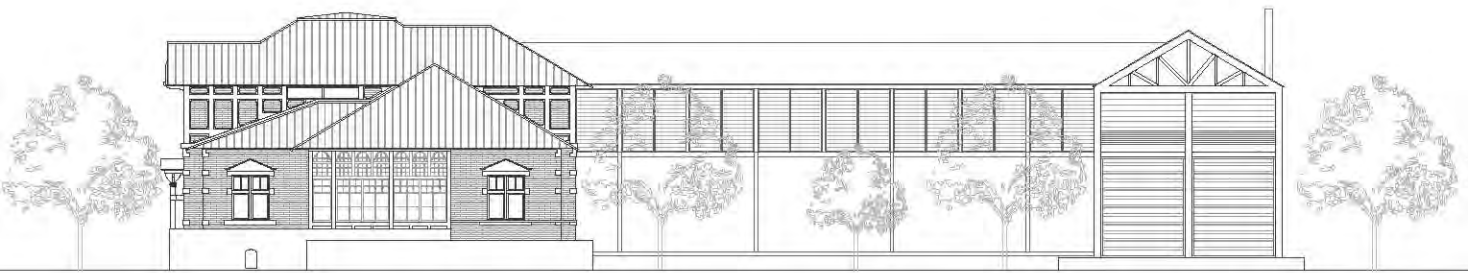
- 1 library bridge
- 2 exterior bridge
- 3 workshop bridge



UPPER FLOOR PLAN

GROUND PLAN:

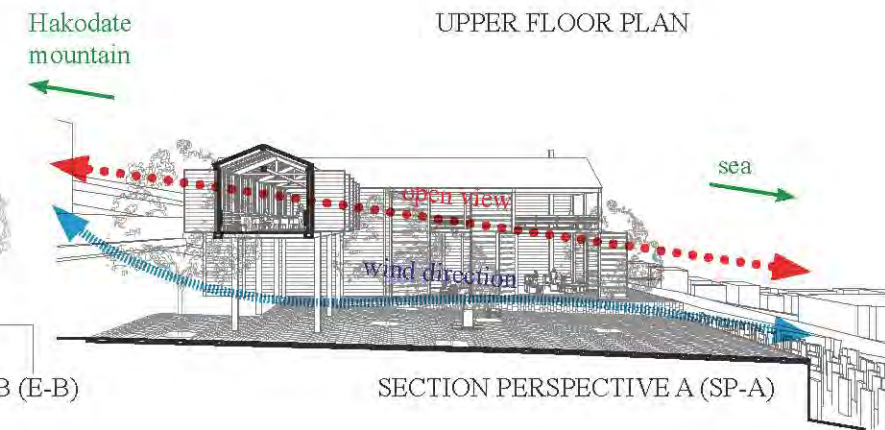
- 1 main entry (library)
- 2 side entry (cafe)
- 3 library
- 4 restaurant cafe
- 5 bar
- 6 outdoor cafe
- 7 outdoor exhibition garden
- 8 glassblowing indoor exhibition
- 9 bathroom
- 10 staff & student storage
- 11 equipment area
- 12 teacher's workstation
- 13 students' workstation



ELEVATION A (E-A)

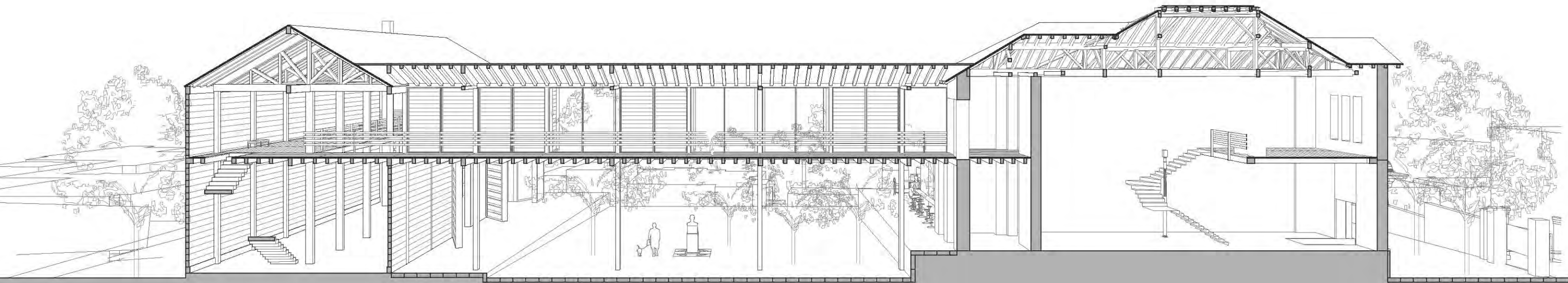


ELEVATION B (E-B)



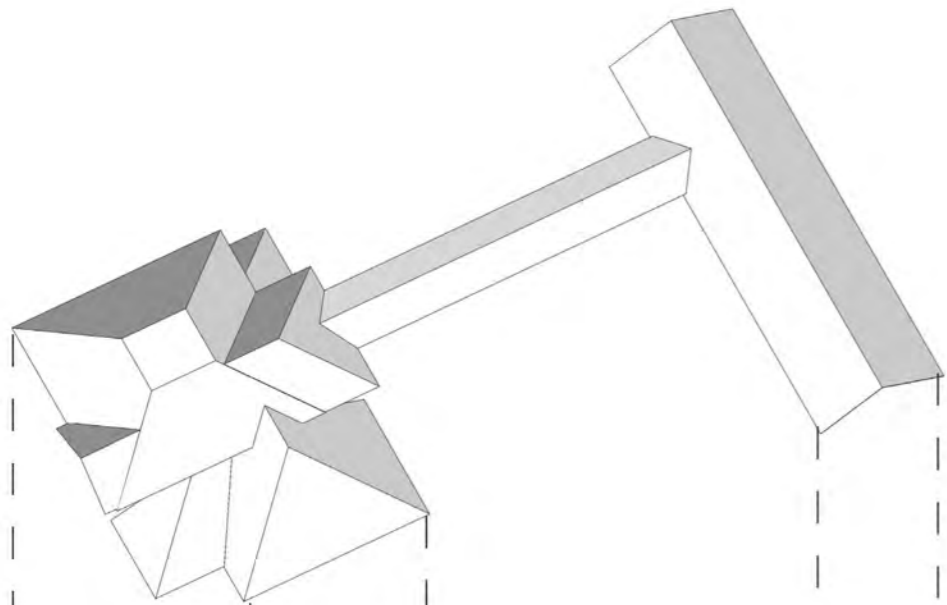
SECTION PERSPECTIVE A (SP-A)

12 5 15m



SECTION PERSPECTIVE B (SP-B)

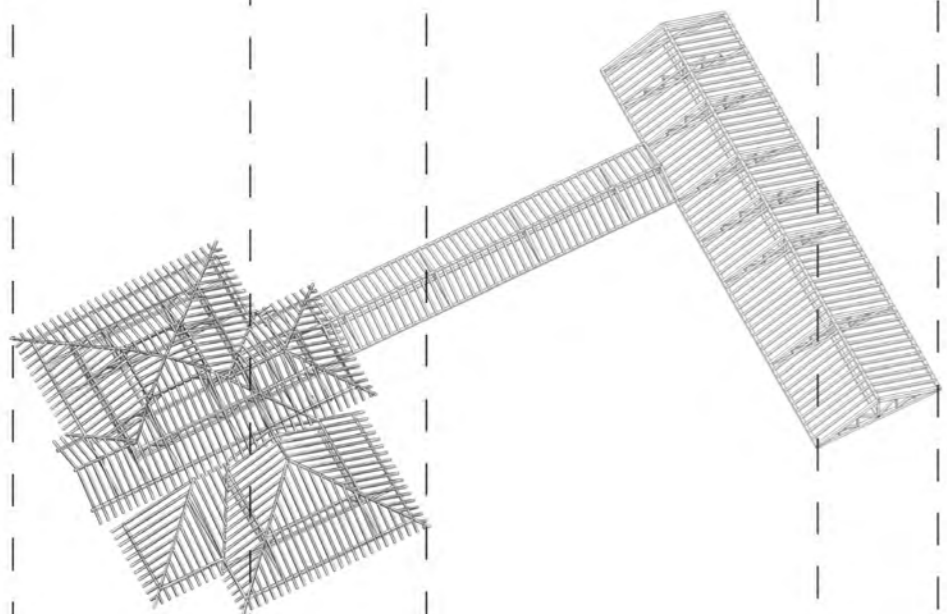
1 2 5 15m



library bridge towards exterior



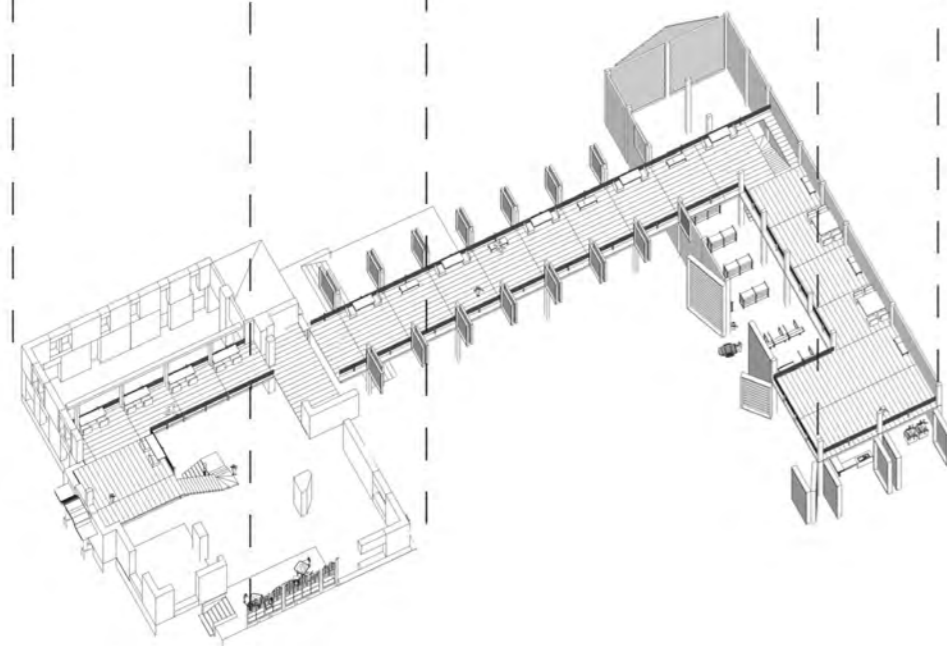
exterior bridge view towards garden and sea



exterior bridge towards workshop



workshop bridge towards garden and sea



cafe view towards garden